

# Sustainable Water Resource Management in Delaware



ENVIRONMENTAL  
FINANCE CENTER



- Launched in 2011
- 74 municipalities registered (*46% municipalities*)
- 35 municipalities certified
- Certified communities have **taken 915 Actions**
- Annual Leadership Trainings and County Summits
- More than 50 Green Team Trainings

## A map of the Washington, D.C. metropolitan area and surrounding regions, including parts of Maryland, Virginia, and Delaware. The map is overlaid with numerous blue and orange pins, indicating the locations of various entities. The pins are distributed across the region, with a higher concentration in the central and eastern parts, particularly around Washington, D.C., and Baltimore. The map also shows major highways, cities, and geographical features like the Chesapeake Bay.



Municipal Online Stormwater Training Center

[ABOUT](#) [COURSES](#) [VIDEOS](#) [CASE STORIES](#) [RESOURCES](#) [FEATURES](#) [CONTACT](#)

Join for **FREE**

Login



### Learn

Take a [course](#), hear from [experts](#) and access [resources](#) on key stormwater management topics.



### Explore

Find inspiration in model [case stories](#) from around the Chesapeake Bay region or get involved in upcoming stormwater [events](#).



### Partner

Contact us to develop a course, video, or provide suggestions for how we can improve MOST.



2017 MOST Center  
All rights reserved

The MOST Center is made possible by:



NFWF

Chesapeake Bay Stewardship Fund

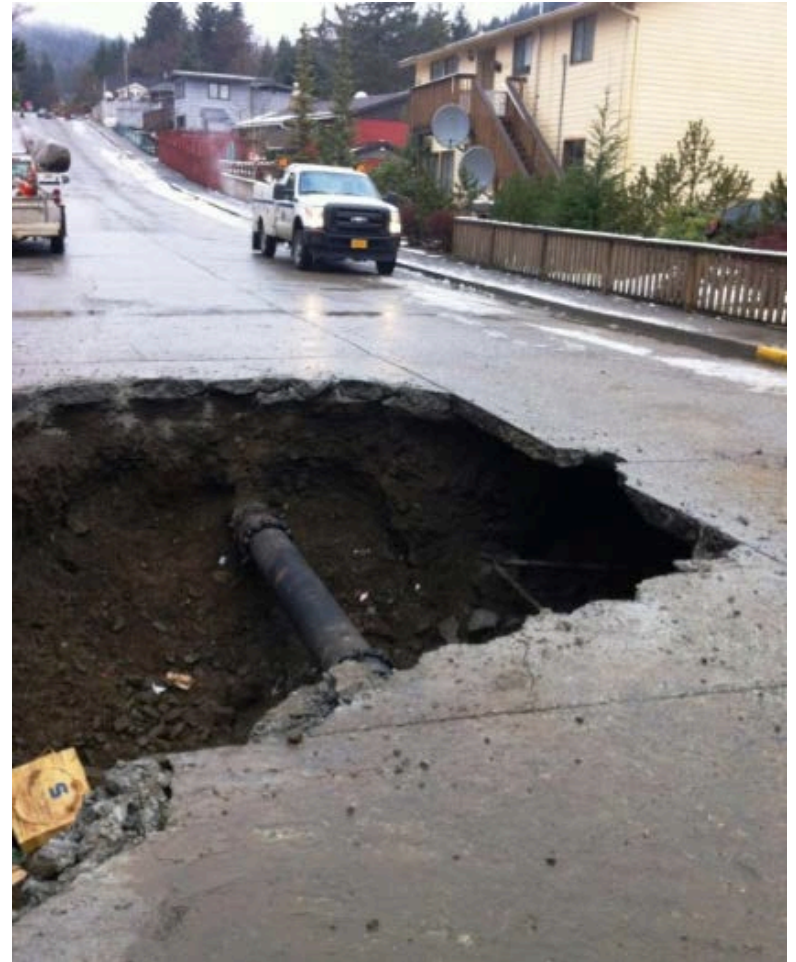


Science. Restoration. Partnership.

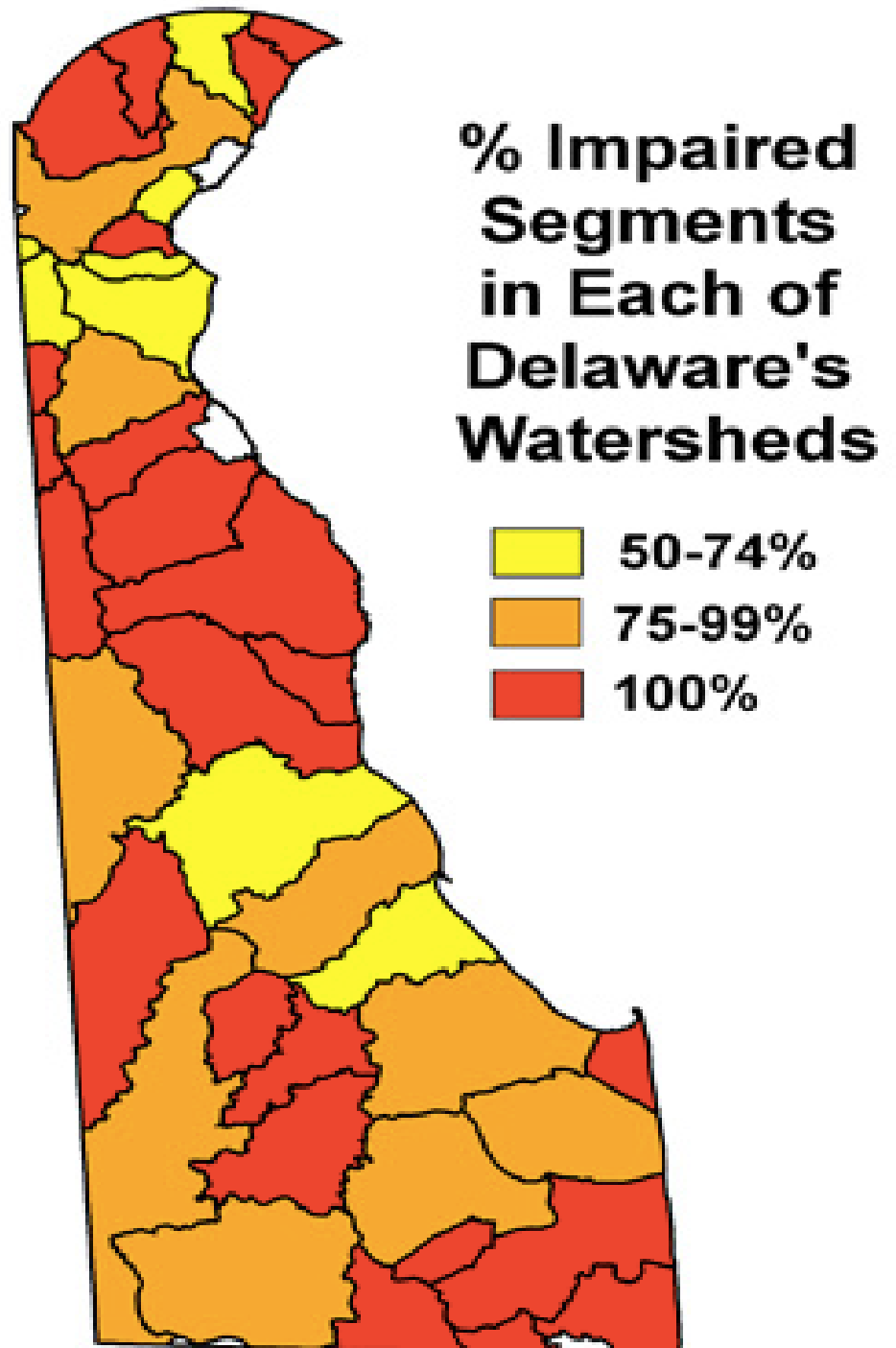


# THE WATER PROBLEM

- **Impacts of past development**
- **Aging infrastructure**
- **More heavy storm events**
- **Sea level rise along with land subsidence**



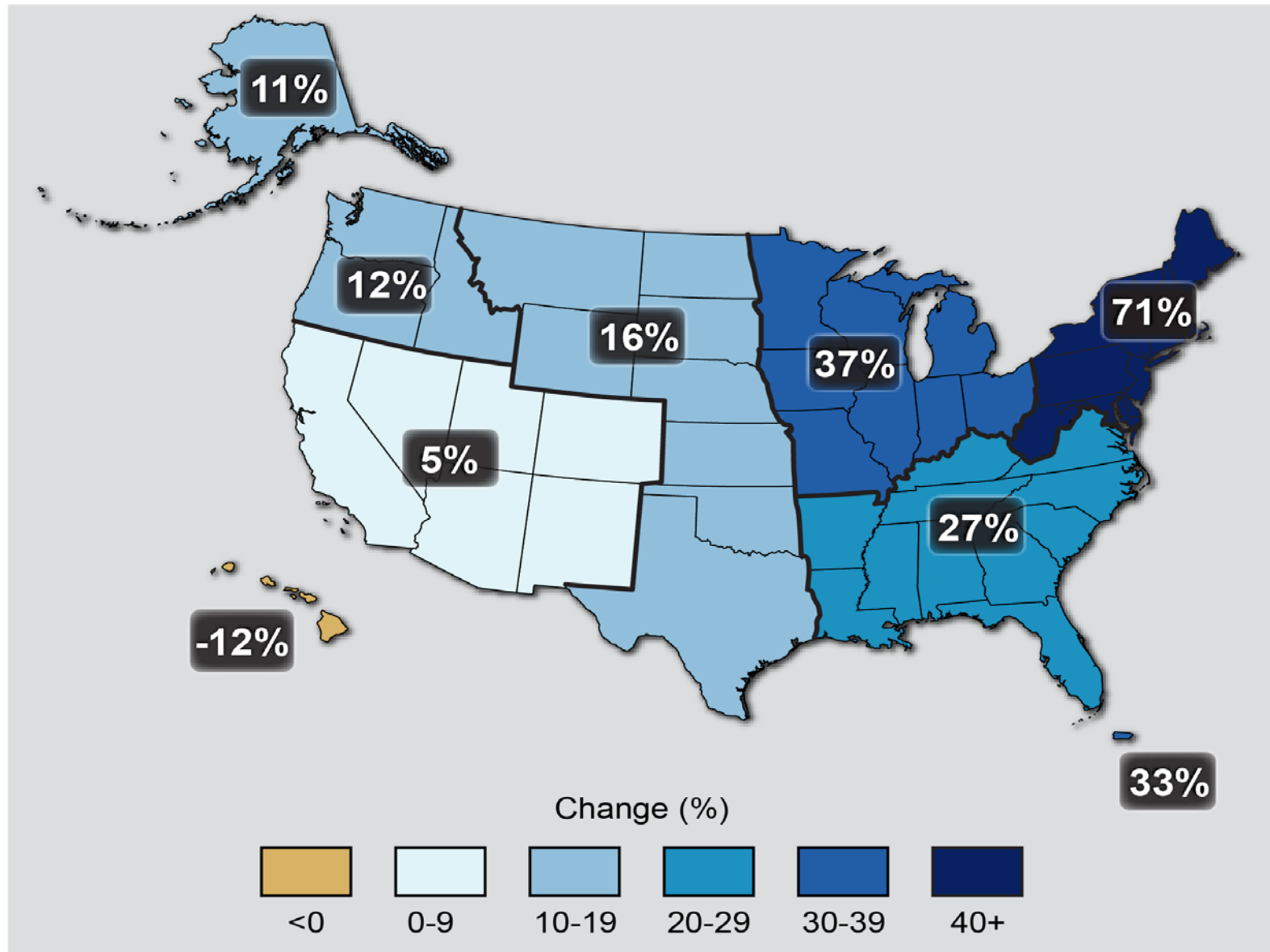
# STATE OF DELAWARE'S WATERS



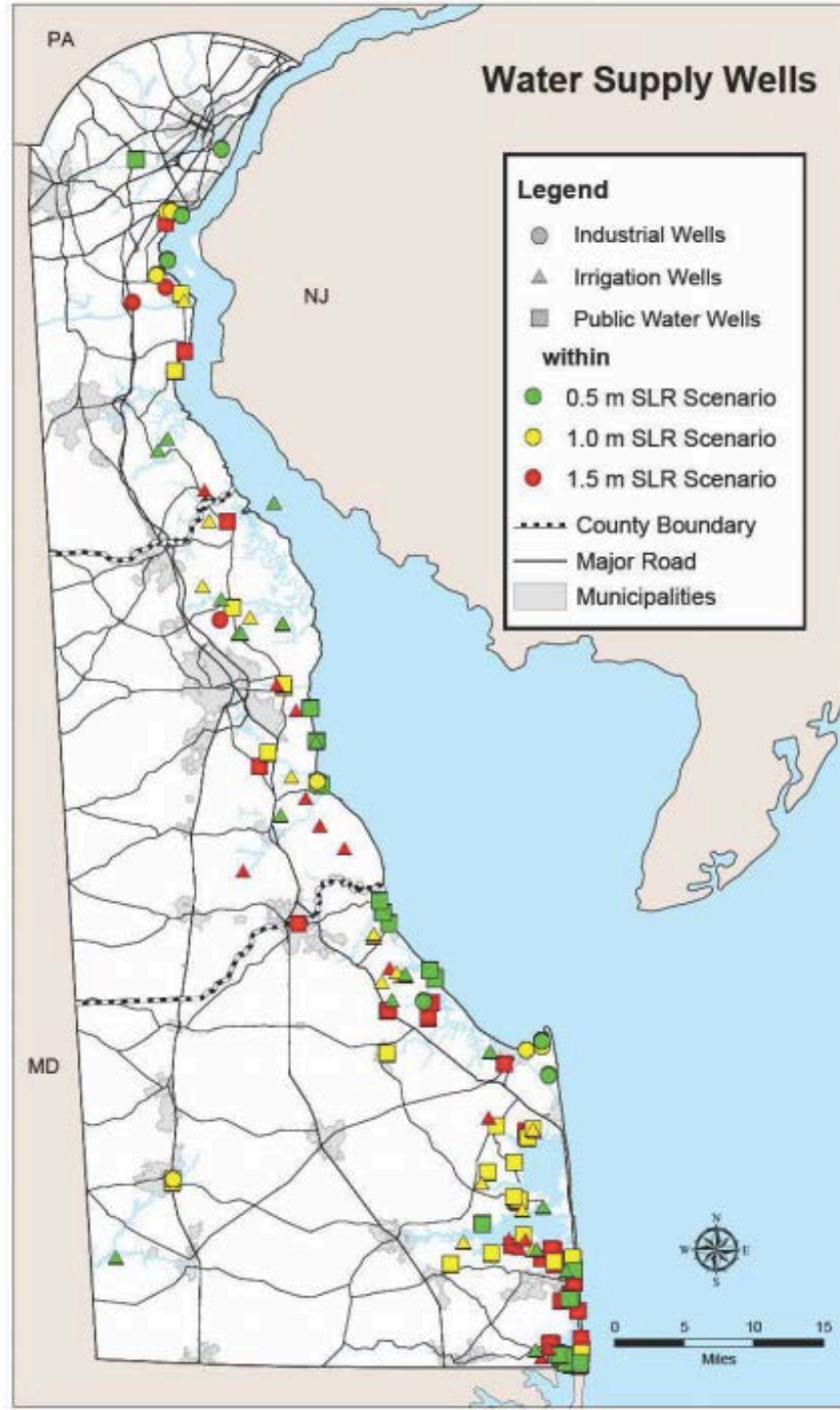
<http://www.dnrec.delaware.gov/swc/wa/Pages/WatershedAssessment305band303dReports.aspx>



## Observed Change in Very Heavy Precipitation







<http://www.dnrec.delaware.gov/coastal/Documents/SeaLevelRise/MappingPubSafety.pdf>

# SOLUTIONS

- **Maximize existing resources**
- **Encourage new funding strategies**
- **Maximize efficiencies**
- **Embrace sustainability as economic development**



# CAMDEN COUNTY MUNICIPAL UTILITY AUTHORITY

***The Camden County Municipal Utilities Authority is committed to protecting water quality, odor minimization, cost efficiency, minimizing carbon footprint, and community service.***

**ACHIEVING SUSTAINABILITY WITHOUT RAISING RATES!**



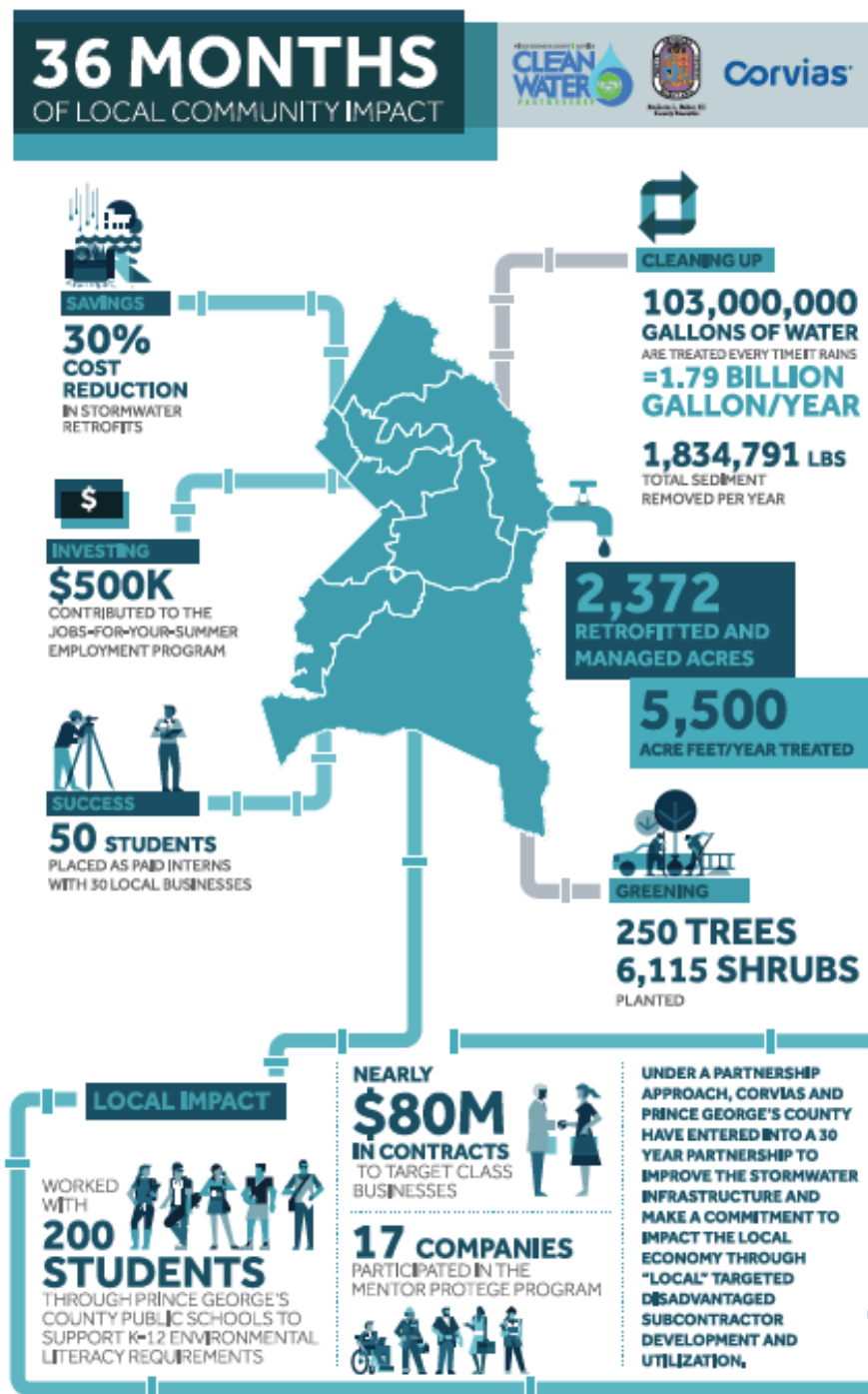


# DERRY TOWNSHIP MUNICIPAL AUTHORITY

Providing a cost effective public service to protect and enhance the water environment and quality of life for our local and regional community.



# PRINCE GEORGE'S COUNTY CLEAN WATER PARTNERSHIP





# RESOURCES

## Strategies for Financing Water Quality Restoration in Delaware



Prepared by the University of  
Maryland Environmental  
Finance Center for the  
Chesapeake Bay Program  
Office on behalf of the State  
of Delaware

June 2017

[efc.umd.edu](http://efc.umd.edu)

Ellen Kohler  
University of Maryland  
Environmental Finance Center  
[ejkohler@umd.edu](mailto:ejkohler@umd.edu)