



SUSSEX PRESERVATION COALITION

Educate ~ Advocate ~ Impact



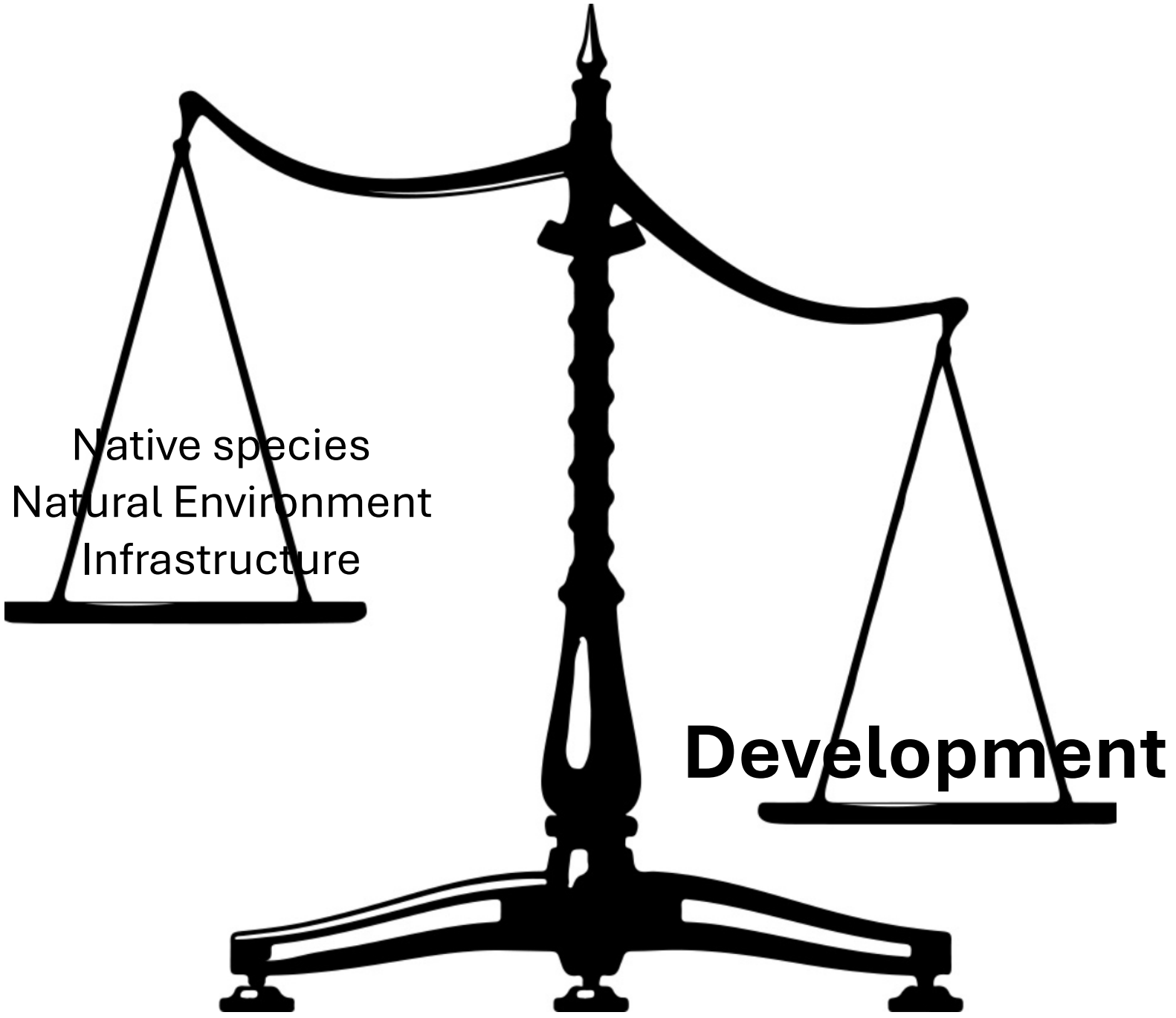




SUSSEX PRESERVATION COALITION

Educate ~ Advocate ~ Impact





Native species
Natural Environment
Infrastructure

Development

The 2024 Election of Three New Council Members Changed the Conversation and Called for a New Direction



Land Use Reform Working Group was tasked to develop recommendations that:

1. Implement smarter, sustainable development
2. Ensure growth is supported by infrastructure
3. Address affordable/workforce housing needs
4. Preserve farmland and natural resources
5. Prevent low-density, uncoordinated sprawl

Land Use Reform Working Group

Representative Group	Working Group Member
Sussex Preservation Coalition	Jill Hicks
American Council of Engineering Companies (ACEC)	Mike Riemann
Home Builders Association Of Delaware	Jon Horner
Environmental Group	Christophe Tulou (CIB)
Sussex Farm Bureau	Jay Baxter or RC Willin
Affordable Housing Advocate	Caitlin Del Collo (DSHA)
Affordable Housing Developer	Matthew Padron (Volker)
Local Residential Developer	Doug Motley (JLAM)
DE Department of Transportation	Mark Luszcz
Office of State Planning Coordination	David Edgell or Dorothy Morris





Government

Citizens

Visitors

Business

Services

Home

Advisory Committee on Aging and Adults with Physical Disabilities

Airport Advisory Committee

Board of Adjustment

Board of Adjustments and Appeals

Board of Assessment Review

Economic Development Committee

Farmland Preservation Advisory Board

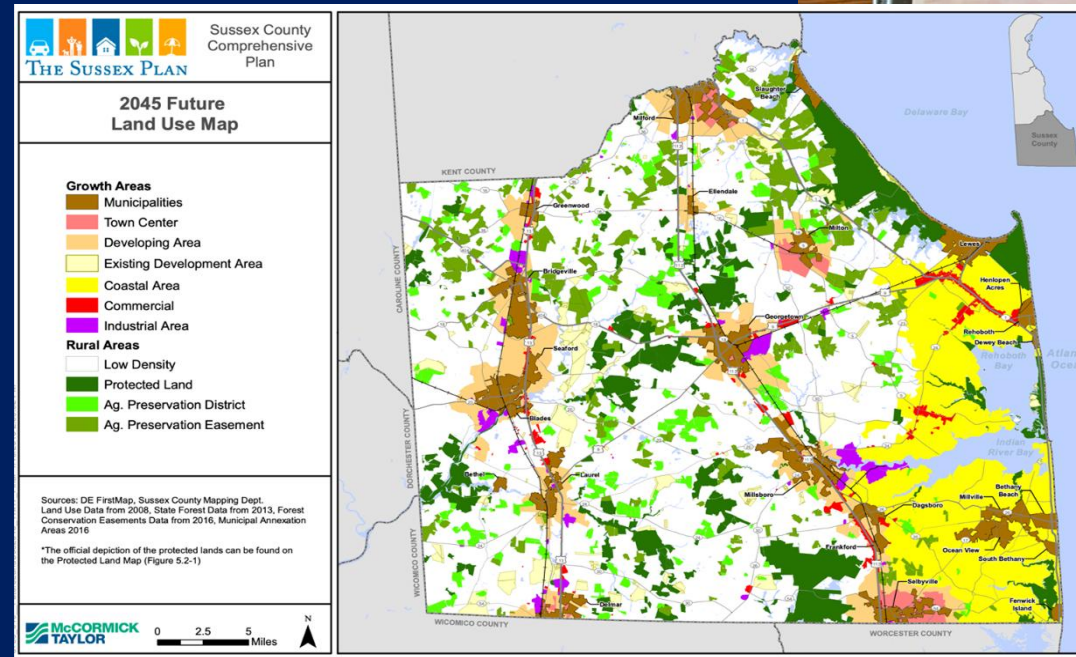
Land Use Reform Working Group

Boards & Committees



Long-term: Align the Future Land Use Map

As part of the 2028 Comprehensive Plan Update, revise the Future Land Use Map (FLUM) using the State Strategies for Spending as a guide, where appropriate, to designate the boundaries of Growth Areas and Conservation Areas.



Six Short-term Priorities:

Sussex County Rental Program (SCRP)

Open Space

99-9C, Interconnectivity, Superior Design

Subdivisions – Rural & Growth

Forest Preservation Ordinance

Code Definitions – Housing Types

Land Use Reform Working Group was tasked to develop recommendations that:

1. Implement smarter, sustainable development
2. Ensure growth is supported by infrastructure
3. Address affordable/workforce housing needs
4. Preserve farmland and natural resources
5. Prevent low-density, uncoordinated sprawl

SPC: envisioning a county where nature and our quality of life are in balance with growth.

