

Tree for Every Delawarean Initiative (TEDI)



DELAWARE DEPARTMENT OF
NATURAL RESOURCES AND
ENVIRONMENTAL CONTROL



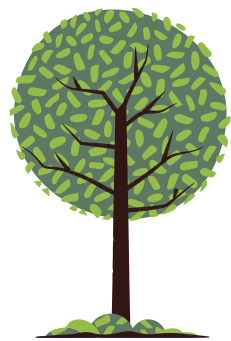
Tree for Every Delawarean Initiative (TEDI)



TEDI launched in November of 2021



Goal of planting one tree for every
Delawarean



Partnership between DNREC &
Delaware Forest Service (DFS)





TEDI

Works with Delaware partners to
support and enhance tree plantings

Encourages, engages, and educates
Delaware constituents

Supports strategies outlined in the
Delaware Climate Action Plan



Partners

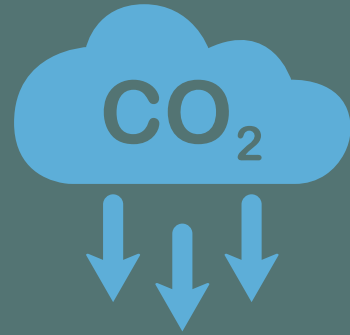
Delaware Department of
Agriculture's Delaware
Forest Service

Interdepartmental
Divisions

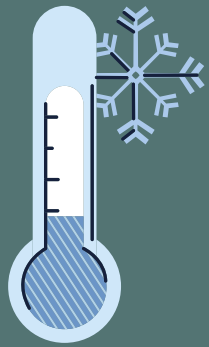
Non -Governmental
Organizations



Nature-based solution to help
fight climate change



Reduce greenhouse gases



Provide shade for cooling



Support wild life and offer
recreational opportunities



Improve air, water, and soil
quality



Why Trees?





TEDI'S Vision

Cultivate a healthy Delaware
that supports planting trees as
a nature-based solution for
recreation, wildlife habitat,
climate mitigation, and the well
being of all Delawareans



One-stop shop for the public



Direct access to the TEDI
tracker



Additional resources for tree
selection, planting, and care



Volunteer and training
opportunities

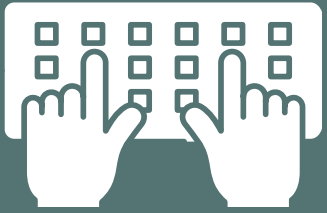


Please visit: de.gov/tedi

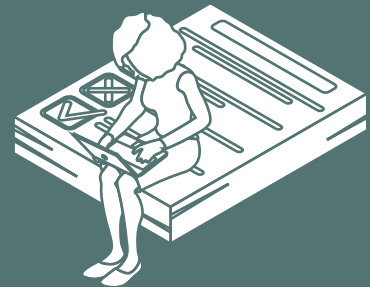


Web page

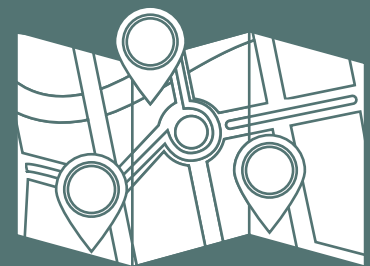




Platform for data collection
from independent and public
tree plantings



Tool used to involve the
public



Up-to-date map of ALL tree
plantings in Delaware
(including TEDI funded)



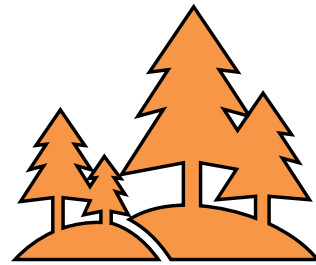
Tree counter to track
progress



TEDI Tracker

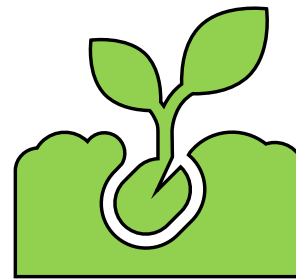


Tracker Categories



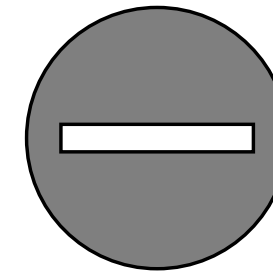
Organized Plantings

- Coordinated by TEDI partners
- State agencies and NGOs
- Partners record data
- Shown on map



Independent Plantings

- Individuals and private groups
- Homeowners & businesses owners
- Citizens record data
- Shown on map



Private Plantings

- Coordinated by TEDI partners
- Private lands
- Partners record data
- Not mapped on TEDI Tracker

A photograph of a large, ancient tree trunk with thick, gnarled bark and numerous large, exposed roots that spread out across the ground. The tree is surrounded by green foliage and grass.

Tracker Tutorial

Visit the Webpage

de.gov/tedi

Go to “You Can Help”

Depending on your device, click “Full Screen Version” or “Mobile Version”

Track Your Tree

Complete and submit a survey

Live Demonstration



FY 2022

Time Frame

Fall 2021 and Spring 2022

Recipients

8 Delaware Partners

Trees Planted

Approximately 100,000

Project Locations

State parks, wildlife areas,
urban areas, and
communities in all 3
counties



FY 2023

New funding July 1, 2022

Call for Proposals (Closed)

Who?

NGOs

State Agencies

DNREC Divisions

What?

Trees and supplies

When?

Fall 2022 & Spring 2023 projects

Where?

Areas in need of reforestation

Forest connectivity areas



In Conclusion TEDI is ...



Bringing communities
together



Involving the public in an
important effort to address
climate change



Providing a better quality of
life for all Delawareans



Thank You!

Any Questions?

Catie Soriano
Division of Climate, Coastal, & Energy
Climate and Sustainability Section
TEDI@delaware.gov
302-735-3480



DELAWARE DEPARTMENT OF
NATURAL RESOURCES AND
ENVIRONMENTAL CONTROL