

# Land Use Planning for Sustainable Communities



# Our Panelists



**Caitlin Del Collo**  
Delaware State Housing  
Authority



**Jeremy Rothwell**  
Fmr. Town of Smryna  
Planning Department

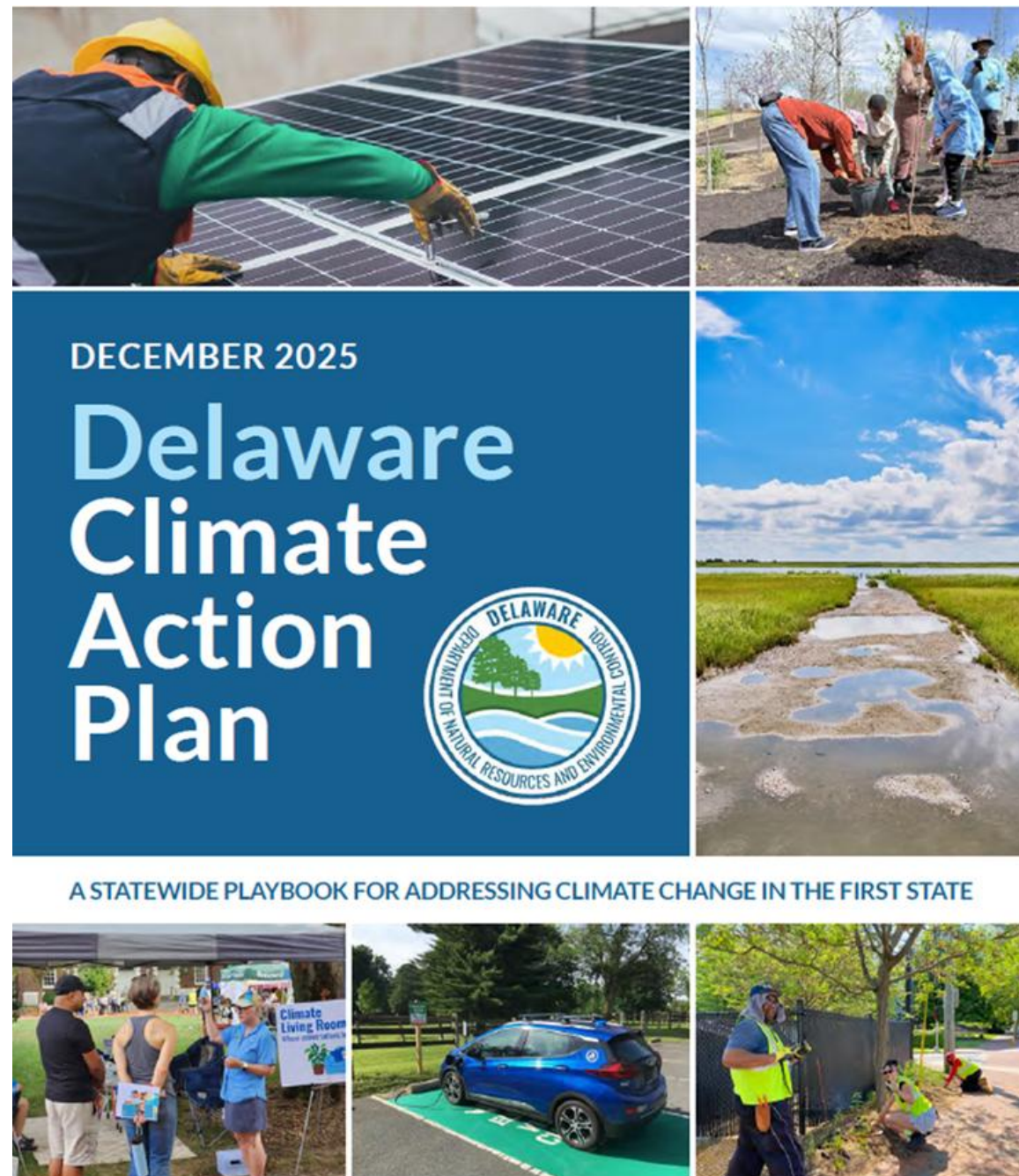


**Mike Fortner**  
City of Newark  
Planning and Development



**Paul Moser**  
DelDOT Active Transportation and  
Community Connections Section

# Delaware just released its statewide playbook for addressing climate change in Delaware



Takes a two-fold approach to climate action:

- Charting a path towards achieving net-zero greenhouse gas emissions by 2050
- Protecting Delaware communities from the impacts of climate change
- Plus! For the first time, includes a chapter on Land Use

[www.de.gov/climateplan](http://www.de.gov/climateplan)



# Climate Change and Land Use Choices are Intrinsicly Linked



Development patterns and transportation emissions



Preservation of aglands for sequestration and resilience benefits



Avoiding new development in high-risk areas

# Climate Change and Land Use Choices are Intrinsicly Linked



## Sprawling development patterns

- cost more to maintain
- Drive up VMT
- Use more ag and forest land
- Use more concrete and materials



Preservation of aglands for sequestration and resilience benefits



Avoidance of development in high-risk areas

# Climate Change and Land Use Choices are Intrinsicly Linked



Development patterns and transportation emissions



Preserving Farms, forests and wetlands is essential to:

- Feed us
- Store carbon
- Absorb floodwaters
- Provide shade
- Improve quality of life



Avoidance of development in high-risk areas

# Climate Change and Land Use Choices are Intrinsicly Linked



Development patterns and transportation emissions



Preservation of aglands for sequestration and resilience benefits



Accommodating growth without increasing community risk to flooding, sea level rise, drainage issues, and urban heat islands

# Climate Change and Land Use Choices are Intrinsicly Linked



Development patterns and transportation emissions



Preservation of aglands for sequestration and resilience benefits



Avoiding new development in high-risk areas

# Emerging Opportunities to work together to meet Housing, Transportation and Climate Goals

- Promote dense, connected, multimodal-friendly communities
- Remove barriers to infill development
- Preserve Delaware's farms forests and wetlands
- Avoid new development in flood-prone areas



# Our Panelists



**Caitlin Del Collo**  
Delaware State Housing  
Authority



**Jeremy Rothwell**  
Fmr. Town of Smryna  
Planning Department



**Mike Fortner**  
City of Newark  
Planning and Development



**Paul Moser**  
DelDOT Active Transportation and  
Community Connections Section