



**Stephen P. Hudson Park  
Rt. 9, Milton, DE**



**Local Success Stories in Land  
Preservation**  
Sara Bluhm  
Executive Director

Safeguarding the land and resources  
that make Sussex County special

# The Challenge

Sussex County is changing rapidly

- Fastest population growth in Delaware
- Significant development pressure
- Need to balance growth with conservation



# The Land Trust Approach

## Sussex County Land Trust

- Conservation easements
- Public parks and trails
- Partnerships with landowners, government, and developers





Can-Do Playground Rendering

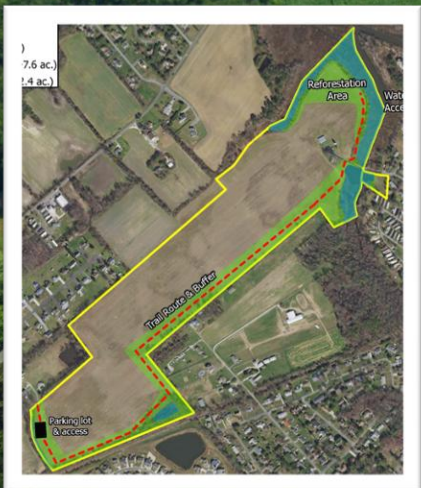


# Hudson Park: A Partnership Model

A partnership model for conservation and community recreation

- **Sussex County:** acquires parkland
- **SCLT:** manages and stewards the property
- **Community partners:** helping expand amenities

**Ard Na Gréine - Under Contract**  
**New Rd., Lewes, DE**



# Ard Na Gréine: A Conservation Model

## Ard Na Gréine Farm — Under Contract

- 88 acres protected through layered conservation
  - 55 acres permanently preserved farmland
  - 30 acres protected through DNREC Open Space
- Agriculture at the core, recreation along the perimeter

# Partnerships With the Development Community

Chase Oaks Preserve — Lewes, DE

Development supporting conservation

- 32 acres donated for open space
- Stewardship funded through DRB Homes settlements
- Collaboration with responsible developers

Chase Oaks Preserve  
Robinsonville Rd., Lewes, DE



Thank You

Conservation succeeds through partnership.

Protecting land.

Supporting communities.

Preserving Sussex County for future generations.

[sara@sclandtrust.org](mailto:sara@sclandtrust.org)

302.386.3003

Nanticoke Crossing Park  
Woodland Ferry Rd., Seaford, DE